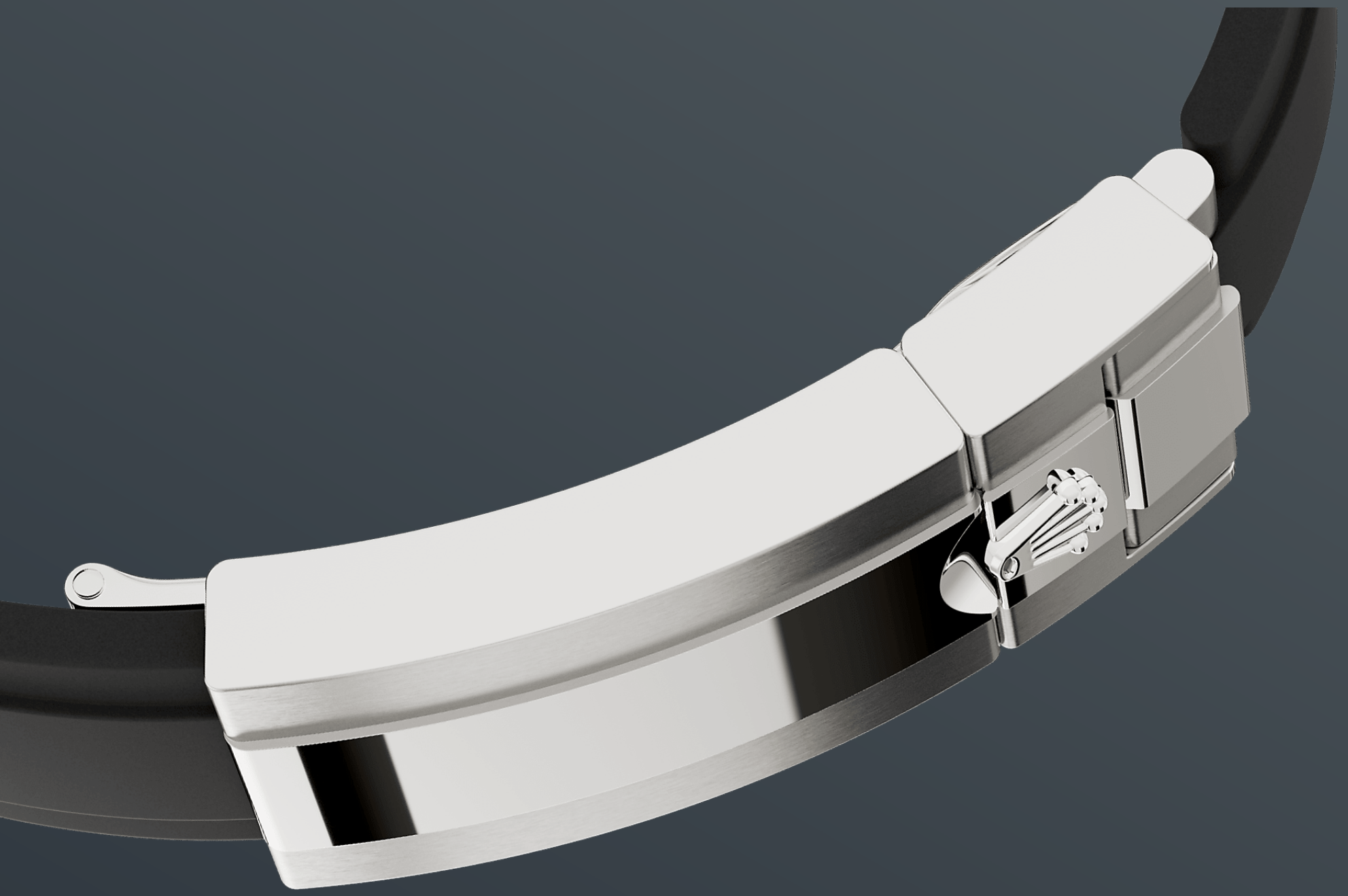




Cosmograph Daytona

Oyster, 40 mm, white gold and
diamonds

**This Oyster Perpetual
Cosmograph Daytona in
18 ct white gold, with a
steel, diamond-set dial
and contrasting counter
rings, features an
Oysterflex bracelet as
well as a diamond-set
bezel and diamond-set
lugs.**



THE OYSTERFLEX BRACELET

Highly resistant and durable

The 18 ct gold versions of the Cosmograph Daytona with a Cerachrom bezel are available with an Oysterflex bracelet. Developed by Rolex and patented, it singularly combines the robustness of a metal bracelet with the comfort of an elastomer bracelet.

It is made up of two flexible curved metal blades – one in each bracelet section – overmoulded with high-performance black elastomer. For optimum

comfort, the Oysterflex bracelet is equipped with cushions on its inner sides and an Oysterlock safety clasp to prevent accidental opening. Its length may be adjusted via the ingenious Rolex Glidelock extension system.



18 CT WHITE GOLD

Commitment to **excellence**

By operating its own exclusive foundry, Rolex has the unrivalled ability to cast the highest quality 18 ct gold alloys. According to the proportion of silver, copper, platinum or palladium added, different types of 18 ct gold are obtained: yellow, pink or white.

They are made with only the purest metals and meticulously inspected in an in-house laboratory with state-of-the-art equipment, before the gold is

formed and shaped with the same painstaking attention to quality. Rolex's commitment to excellence begins at the source.



STEEL DIAL

With chronograph counters

This model features a steel, diamond-set dial with 18 ct gold applique hour markers and hands with a Chromalight display, a highly-legible luminescent material.

The dial allows drivers to accurately map out their track times and tactics without fail.



DIAMOND-SET BEZEL

Adorning a legendary chronograph

The timepiece incorporates a bezel adorned with 36 trapeze-cut diamonds.

This now legendary chronograph is the instrument of choice for measuring time intervals and determining average speeds. On this gem-set version, the emblematic tachymetric scale is replaced with diamonds.

More Cosmograph Daytona technical details

Reference 126539TBR

Model Case

Type

Oyster, 40 mm, white gold and diamonds

Diameter

40 mm

Material

White gold

Bezel

Set with diamonds

Oyster Architecture

Monobloc middle case, screw-down case back and winding crown

Winding Crown

Screw-down, Triplock triple waterproofness system

Crystal

Scratch-resistant sapphire

Water Resistance

Waterproof to 100 metres / 330 feet

Movement

Type

Perpetual, mechanical chronograph, self-winding

Calibre

4131, manufacture Rolex

Precision

-2/+2 sec/day, after casing

Oscillator

Paramagnetic blue Parachrom hairspring. High-performance Paraflex shock absorbers

Winding

Bidirectional self-winding via Perpetual rotor

Power reserve

Approximately 72 hours

Functions

Centre hour and minute hands, small seconds hand at 6 o'clock. Chronograph via centre seconds hand, 30-minute counter at 3 o'clock and 12-hour counter at 9 o'clock. Stop seconds for exact time setting

Bracelet

Type

Oysterflex

Clasp

Folding Oysterlock safety clasp with Rolex Glidelock extension system

Bracelet Material

Flexible metal blades overmoulded with high-performance elastomer

Dial

Type

Steel, bright black counter rings set with diamonds

Details

Highly legible Chromalight display with long-lasting blue luminescence

Certification

Type

Superlative Chronometer (COSC + Rolex certification after casing)

Explore and discover more on Rolex.com

All intellectual property rights such as trademarks, service marks, trade names, designs and copyrights are reserved.

Nothing contained in this website may be reproduced without written permission. Rolex reserves the right at all times to modify the models featured in the present website.

